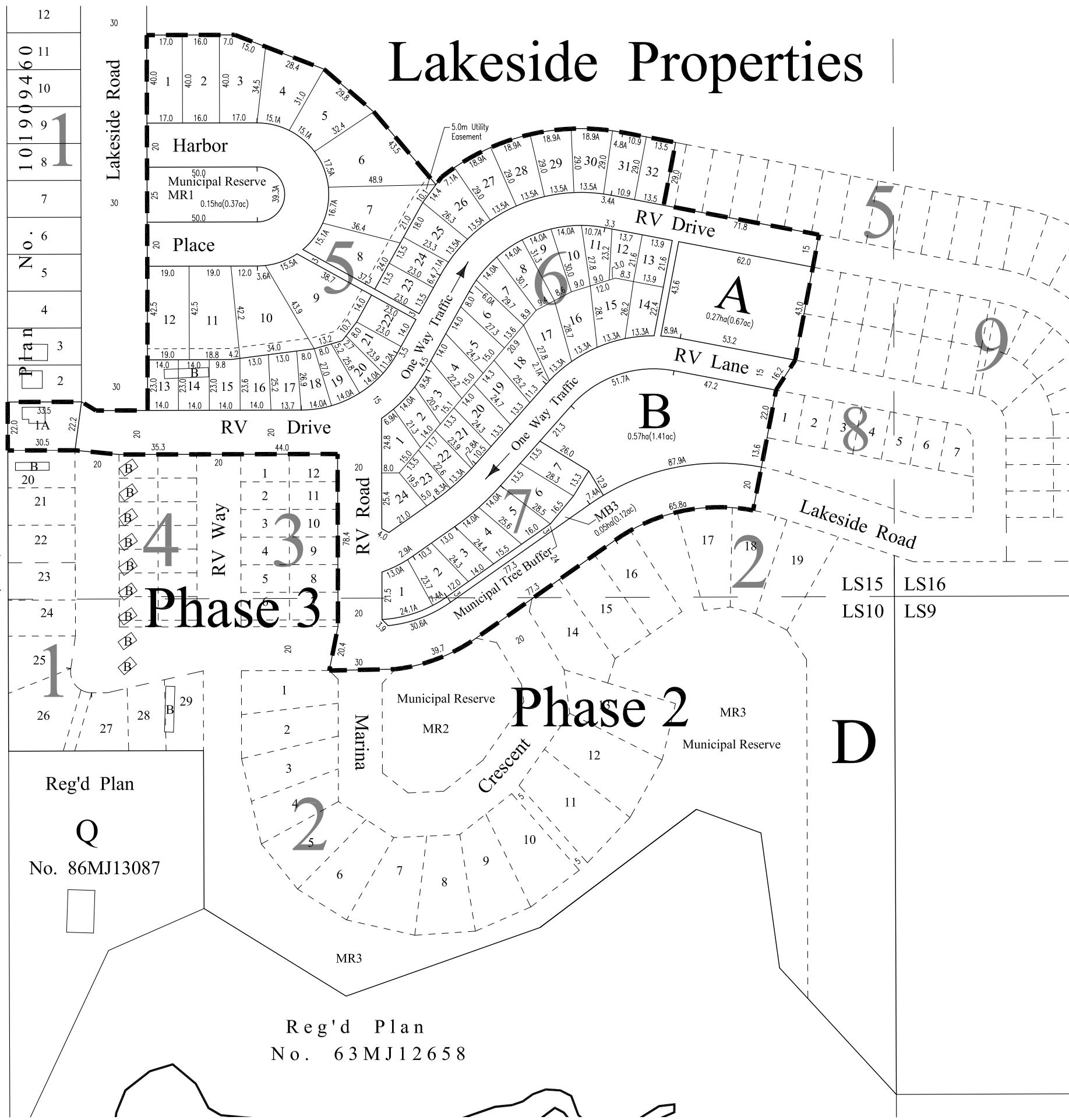


Harbor Golf Course

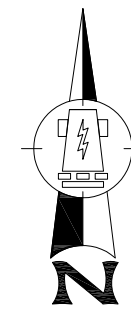
NW 1/4 Sec 2-25-5-W 3rd Mer  
East Bdy NE 1/4 Sec 2



# Lakeside Properties

## Phase 1

Plan of Proposed Subdivision  
of Lot 1, Block 1, Plan 101909460  
And of Part of Parcel E, Plan 101958037  
In the NE 1/4 Section 2  
Twp 25, Rge 5, W 3rd Mer  
RM of Loreburn No. 254  
SASKATCHEWAN



Scale 1:2000



Notes:

- Area to be subdivided is outlined with a bold, dashed line and contains 5.68 ha (14.04ac).
- Dimensions shown are in metres and decimals thereof and are approximate and may vary by ± 1.00 metres.
- Buildings shown as **B** are to be moved or removed.
- Total area of Municipal (Tree) Buffers = 0.07ha (0.17ac). (All 3 Phases)

Dated: March 5th, 2009

W.J. Peters S.L.S.

Developer/Owner Approved LS10, LS15, & LS16

Lakeside RV Trailer Park Ltd.

Owner Approved Lot 1, Block 1, Plan 101909460

Tom Jukes